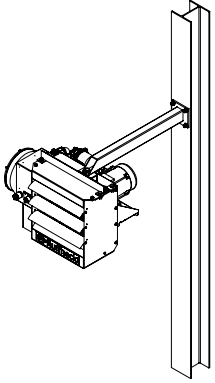


# Mounting Kits

## Basic Mounting Kit (BMK)\*

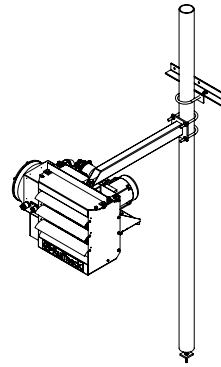
The BMK is suitable for applications where the support arm can be bolted or welded directly to structural steel or concrete.



Model	Approximate Shipping Weight	
	lbs	kg
FX4/FX5 (12" / 305 mm fan)	16.5	7
FX4/FX5 (16" / 406 mm fan)	18.2	8
FX4/FX5 (20" / 508 mm fan)	19.3	9
HP / FR 12 / 16	16.5	7
HP / FR 20 / 24	18.2	8
AH-12A	16.5	7
AH-16A	18.2	8
AH-20A	19.3	9
AH-24A	20.3	9

## Pipe Mounting Kit (PMK)\*

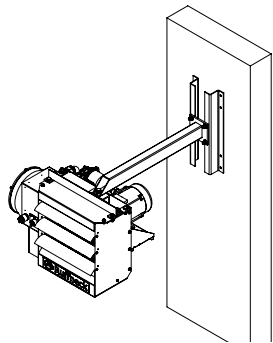
Particularly useful in buildings with insufficient structural strength to use other types of mounts. Requires 3" (76 mm) pipe (3½" / 89 mm O.D.) (not supplied).



Model	Approximate Shipping Weight	
	lbs	kg
FX4/FX5 (12" / 305 mm fan)	23.7	11
FX4/FX5 (16" / 406 mm fan)	25.4	12
FX4/FX5 (20" / 508 mm fan)	26.5	12
HP / FR 12 / 16	23.7	11
HP / FR 20 / 24	25.4	12
AH-12A	23.7	11
AH-16A	25.4	12
AH-20A	26.5	12
AH-24A	27.5	12

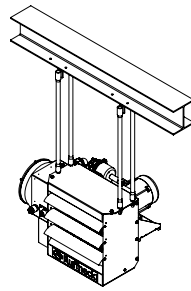
## Wall Mounting Kit (WMK)\*

Ideal for use in buildings that have substantial walls. The Z sections provide additional support where necessary.



Model	Approximate Shipping Weight	
	lbs	kg
FX4/FX5 (12" / 305 mm fan)	24.3	11
FX4/FX5 (16" / 406 mm fan)	25.4	12
FX4/FX5 (20" / 508 mm fan)	26.5	12
HP / FR 12 / 16	24.3	11
HP / FR 20 / 24	25.4	12
AH-12A	24.3	11
AH-16A	25.4	12
AH-20A	26.5	12
AH-24A	27.5	12

## Hanging Mounting Kit (HMK)

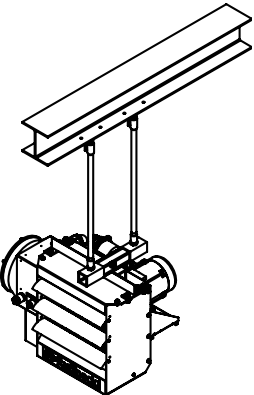


Simple and economical if an adequate overhead structure exists. Requires ½" (13 mm) pipe, cut and threaded (not supplied).

Model	Approximate Shipping Weight	
	lbs	kg
All FX4/FX5	4.5	2
All HP / FR	4.5	2
All AH	4.5	2

## Swivel Hanging Mounting Kit (SHMK)\*

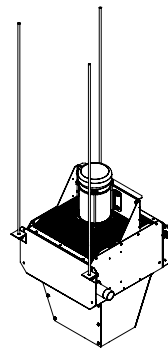
Swivels 360°. Requires ½" (13 mm) pipe, cut and threaded (not supplied).



Model	Approximate Shipping Weight	
	lbs	kg
FX4/FX5 (12" / 305 mm fan)	18.2	8
FX4/FX5 (16" / 406 mm fan)	19.4	9
FX4/FX5 (20" / 508 mm fan)	20.4	9
HP / FR 12 / 16	18.3	8
HP / FR 20 / 24	20.1	9
AH-12A	18.2	8
AH-16A	19.4	9
AH-20A	20.4	9
AH-24A	21.4	10

## Vertical Hanging Mounting Kit (VHMK)

Simple and economical when mounting to an appropriate overhead structure. (Requires 3/8" / 10 mm THD Rod)



Model	Approximate Shipping Weight	
	lbs	kg
All AV	4.5	2

### Notes:

Mounting kits are made of steel with wet applied enamel paint. If the heater is installed on a structure that is to be transported, provide additional support for the heater during transit. The suspended weight should not exceed 300 lbs (136 kg).

### How To Order:

When ordering mounting kits, specify the type of kit required and the basic model of the heater to be mounted.

\* Not suitable for models - HP 30, FR 30, HP 36, FR 36, or Tandem AH Series (24B fan configuration).

BMK, PMK, WMK, HMK, SHMK